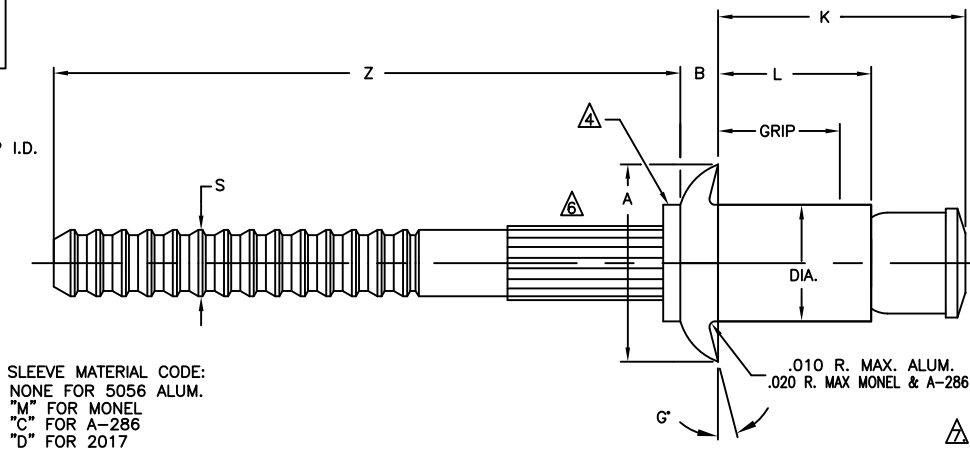
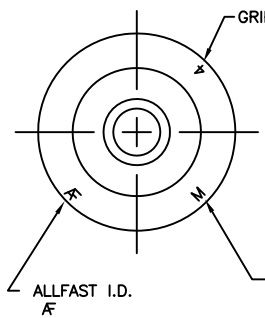


ALLFAST

FASTENING SYSTEMS, Inc.

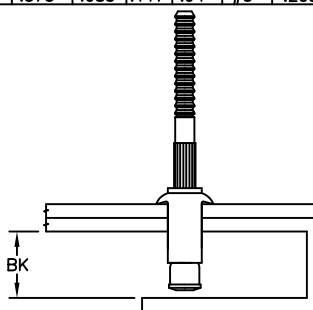


SLEEVE MATERIAL CODE:
 NONE FOR 5056 ALUM.
 "M" FOR MONEL
 "C" FOR A-286
 "D" FOR 2017

LUBRICATION: AS REQUIRED FOR PERFORMANCE.

GRIP LIMITS	GRIP DASH NO.	-4 DIA.		-5 DIA.		-6 DIA.	
		L REF.	K REF.	L REF.	K REF.	L REF.	K REF.
.062	-01	.161	.37	.192	.40	.214	.45
.083	-02	.223	.49	.254	.52	.271	.56
.126	-03	.286	.54	.317	.56	.334	.60
.188	-04	.348	.60	.379	.63	.396	.66
.251	-05	.411	.66	.442	.69	.459	.72
.313	-06	.473	.72	.504	.75	.521	.79
.376	-07	.536	.79	.567	.81	.584	.85
.438	-08	.598	.85	.629	.88	.646	.91
.501	-09	.661	.91	.692	.94	.709	.97
.563	-10			.754	1.00	.771	1.04
.626	-11					.834	1.10
.688	-12					.896	1.16

DIA. DASH NO.	DIA. +.003	A DIA. ±.010	B ±.005	S DIA. REF.	Z MIN.	DRILL SIZE	HOLE LIMITS	DRILL SIZE NO.	G MAX.	BK MIN.
-4	.140	.250	.059	.081	.87	#27	.143-.146	27	8"	.394
-5	.173	.312	.072	.100	.94	#16	.176-.180	16	8"	.425
-6	.201	.375	.085	.117	.94	#5	.205-.209	5	8"	.459

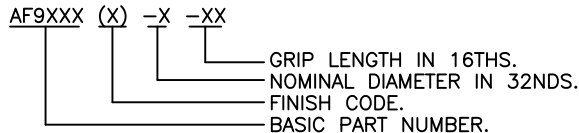


RIVET NO.	MATERIAL				FINISH			
	SLEEVE	STEM	LOCK RING	BULB FORMER	SLEEVE	STEM	LOCK RING	BULB FORMER
AF9253	5056 ALUM. ALLOY QQ-A-430	15-7PH CRES AMS 5657	A-286 CRES AMS 5731	7050 ALUM ALLOY QQ-A-430	MIL-DTL-5541 PLAIN COLOR	PASSIVATE QQ-P-35	PASSIVATE QQ-P-35	MIL-DTL-5541
AF9353	2017 ALUM ALLOY QQ-A-430	15-7PH CRES AMS 5657	A-286 CRES AMS 5731	7050 ALUM ALLOY QQ-A-430	MIL-DTL-5541	PASSIVATE QQ-P-35	PASSIVATE QQ-P-35	MIL-DTL-5541
AF9553	MONEL QQ-N-281	15-7PH CRES AMS 5657	A-286 CRES AMS 5731	MONEL QQ-N-281	NONE	PASSIVATE QQ-P-35	PASSIVATE QQ-P-35	NONE
AF9553P	MONEL QQ-N-281	15-7PH CRES AMS 5657	A-286 CRES AMS 5731	MONEL QQ-N-281	ALUM. COAT MIL-C-83488	PASSIVATE QQ-P-35	PASSIVATE QQ-P-35	NONE
AF9453	A-286 CRES AMS 5731	15-7PH CRES AMS 5657	A-286 CRES AMS 5731	A-286 CRES AMS 5731	NONE	PASSIVATE QQ-P-35	PASSIVATE QQ-P-35	NONE
AF9453P	A-286 CRES AMS 5731	15-7PH CRES AMS 5657	A-286 CRES AMS 5731	A-286 CRES AMS 5731	ALUM. COAT MIL-C-83488	PASSIVATE QQ-P-35	PASSIVATE QQ-P-35	NONE

NOTES:

DIA. DASH NO.	MIN. GRIP
-4	.025
-5	.031
-6	.037

- DO NOT CLEAN OR DEGREASE PRIOR TO INSTALLATION.
- ADD LETTER "T" TO BASIC PART NUMBER TO DESIGNATE TRANSLUBE OR DRY FILM LUBRICANT ONLY. EXAMPLE: AF9253T4-3
- SILVER COLORED DRIVING ANVIL IDENTIFIES OVERSIZE DIAMETER RIVETS.
- HEAD MARKINGS VISIBLE AFTER INSTALLATION.
- SPIRAL KNURL OPTIONAL.
- BK MIN. FOR 4-1, 5-1, AND 6-1, IS .370, .394, AND .427 RESPECTIVELY.



UNCONTROLLED COPY
WILL NOT BE KEPT UP TO DATE

PAT. NO. 5,599,147

BY:	DATE	REV.	BY	DATE	C.R.NO.	STANDARD	
DRAWN BY: D. NGUYEN	06/20/95	G	J.Y.	01/13/04	4858	AF 9253	AF 9453
CHECKED: APPROVAL		H	L.D.	04/17/07	6066	AF 9353	AF 9553
APPROVED: ON FILE		J	L.D.	04/24/07	6071		

SUPERMAX RIVET
 UNIVERSAL HEAD, LOCKED SPINDLE
 OVERSIZE DIAMETER